

DURACON®

Highly durable very fast curing MMA flooring system and solutions for food, commercial and industrial environments.



DURACON®

Seamless ultra quick and extremely durable MMA systems.

- Worldwide leadership and innovation in MMA technology.
- Expertise in application and professional technical support by specialists in MMA.
- Largest range of reactive resins to offer the best solution.
- Extensive worldwide references, millions of m².
- Extensive independent test certification including EN 13813 and EN 1504-2, CE labels.



ADVANTAGES

always a little faster, always state-of-the-art solutions

OWNER / SPECIFIER

- Cost effective
- High chemical and biological resistance
- High resistance to impact and mechanical wear
- Non-absorbent surfaces
- Long service life
- Seamless, smooth or non-slip surfaces
- Highly decorative finish
- May be applied at subzero temperatures
- Overnight installations possible
- Can be applied on old and new substrates of concrete, ceramic tiles and wood
- Suitable for steam cleaning
- Tailored to your needs
- Can be cleaned quickly
- Hygienic
- Very fast turnaround
- Low maintenance

ENGINEER

- Fully bonded, reduces risk of detachment, impact, tracking, chemical bond between layer
- Wide temperature range of application
- May be applied at varying thicknesses
- One system for vertical & horizontal applications
- Various degrees of non-slip finish can be created

CONTRACTOR

- Rapid application, up to 250 - 500 m² per day (with 1 crew)
- Applied in the widest range of climatic conditions (-30°C to +35°C)
- Problem solving solution for clients requirements
- Physiologically safe
- Ready for use in 2 hours
- Extremely short curing times

SYSTEMS

- Duracon® SL-System (2-3 mm)
- Duracon® BC-System (3-5 mm)
- Duracon® L-System (5-8 mm)
- Duracon® TR-System (4-5 mm)

* *Different slip resistant finishes possible.*



**READY FOR USE IN 2 HOURS AFTER THE APPLICATION,
THAT SAVES TIME AND MONEY!**



TYPICAL APPLICATIONS INCLUDE:

FOOD AND BEVERAGE INDUSTRY

- Industrial and hotel kitchens
- Catering facilities
- Meat processing facilities
- Slaughterhouses
- Soft drink and beverage production
- Fish processing
- Fruit and vegetable processing
- Fast food and ready meals
- Airline Catering
- Milk Industry

PHARMACEUTICALS

- Packaging
- Production research
- Hospital theatres
- Health care

TRANSPORT

- Showrooms
- Mechanical workshop
- Carpark ramps
- Train platforms
- Stairs
- Metrostations

LEISURE

- Stadiums
- Arena
- Education
- Playing grounds
- Pool deck
- Studios
- Government institutions
- Public spaces

GENERAL INDUSTRIES

- Tobacco
- Electronics
- Engineering
- Distribution centers
- Shops

CHEMICAL INDUSTRY

- Production areas
- Storage and packaging

WAREHOUSES

- Industrial kitchens
- Hotel Kitchens

WORLDWIDE REFERENCES



RPM Belgium applied the floors of the Eiffel Tower.

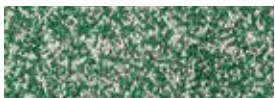


RPM Belgium applied many Pool Decks in Las Vegas.

WIDE SELECTION OF COLOURS AND DESIGN POSSIBILITIES

COLOUR QUARTZ MIXES

Note: Colours are approximate because of printing limitations.



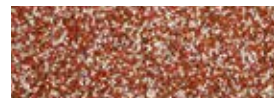
MIX 200



MIX 300



MIX 400



MIX 500



MIX 600

UNI COLOUR QUARTZ



BLACK



BLUE



GREEN



GREY



RED



YELLOW



WHITE

COLOURS FOR THE SMOOTH SELF-LEVELING SYSTEMS (SL-SYSTEM) - MORE RAL-COLOURS ON REQUEST



PALE GREEN
± RAL 6021



TOMATO RED
± RAL 3031



BEIGE
± RAL 1001



PEBBLE GREY
± RAL 7032



STONE GREY
± RAL 7030



CONCRETE GREY
± RAL 7023

This brochure is not intended to establish product recommendations for any installation. To the best of our knowledge the information contained herein is true and accurate at the time of issue, but is subject to change without prior notice. No part of this brochure may be copied without written authorisation of the RPM Belgium Vandex Group®.

WARRANTY

The RPM Belgium Vandex Group® warrant all goods to be free from defects and will replace materials proven to be defective. The given information corresponds to our present standard of knowledge. However, it is the buyer's responsibility to determine the suitability of the products in individual cases by conducting own tests.

The RPM Belgium Vandex Group® is a subsidiary of RPM Inc., USA, a public owned American company. The RPM Belgium Vandex Group® is a leading manufacturer of industrial flooring systems, waterproofing products, coatings, sealants and membranes. RPM Belgium Vandex Group® is certified by Lloyd's as a ISO 9001 company and all products are controlled according to the ISO 9001 quality standard.



RPM BELGIUM N.V.

H. Dunantstraat 11B • B-8700 Tielt • T.: +32 (0) 51 40 38 01

ALTECO TECHNIK GMBH

Raiffeisenstraße 16 • D-27239 Twistringen • T.: +49 (0) 42 43 92 95 0

HERMETA GMBH

Kanalstraße 11 • D-12357 Berlin • T.: +49 (0) 30 661 70 72

MONILE FRANCE SARL

10, rue de la Lande • F-35430 St. Jouan des Guerets • T.: +33 (0) 608 86 96 56

ALTECO POLYMER SYSTEMS

436 Seventh Avenue, Suite 1850 • Pittsburgh, PA 15219 • +1 216 258 8715

VANDEX INTERNATIONAL LTD

Rötistrasse 6 • CH-4501 Solothurn • T.: +41 (0) 32 626 36 36

VANDEX ISOLIERMITTEL GMBH

Industriestraße 19-23 • D-21493 Schwarzenbek • T.: +49 (0) 41 51 89 15 0

VANDEX AG

Rötistrasse 6 • CH-4501 Solothurn • T.: +41 (0) 32 626 36 46