

MONOPUR[®] INDUSTRY

*Heavy Duty Polyurethane Concrete Floor System
for Extreme Service Conditions.*



MONOPUR® INDUSTRY

A Seamless Heavy Duty Polyurethane Concrete Flooring System.

- Blend of special hybrid polyurethane resins that are combined with a composite and quartz filler.
- Expertise in application and professional technical support by specialists in PU concrete.
- Largest range of resin and cement technologies to offer the best solution.
- Extensive worldwide references.
- Extensive independent test certification including EN 13813 and EN 1504-2 CE labels.



ADVANTAGES

EXCELLENT RESISTANCE TO CONTINUOUS HOT & COLD LIQUID SPILLAGE

Monopur® Industry at 9mm will resist repeated spillage of hot & cold liquids at temperatures ranging from -40°C up to 120°C.

SERVICE CONDITIONS

Monopur® Industry is capable of resisting thermal shock & is resistant to frequent & regular steam cleaning.

EFFECTIVE INSTALLATION

Monopur® Industry is only installed by specialist applicators.

LOW ODOUR

The system may generally be installed without side effects whilst the facility is under full operating circumstances.

EASE OF CLEANING & MAINTENANCE

Monopur® Industry is non-absorbent & impermeable. It is thus easy to clean and maintain hygienic surfaces.

HIGH CHEMICAL RESISTANCE

Monopur® Industry is resistant to a wide range of chemicals such as acids, alkalis, salts, oil, blood, lactic acids, fats, carburants, aggressive gases, marine air and most solvents.

HIGH MECHANICAL RESISTANCE

Monopur® Industry exhibits excellent wear, impact and abrasion resistance to heavy duty traffic.

LIMITED DOWNTIME

Monopur® Industry can generally be put back into service within 24 – 36 hours depending on ambient temperatures. Full chemical resistance is attained at 48 hours dependent on ambient conditions.

FUNCTIONALLY SAFE

The system is non – slip under both wet & dry conditions and surface textures may be altered to comply with client regulations.

SYSTEMS

- Monopur® Industry SL (2 mm, 4 mm or 5 mm).
- Monopur® Industry SL Conductive (2 mm).
- Monopur® Industry Mortar (6 mm to 9 mm).
- Monopur® Industry NS (6 mm to 9 mm).

* *Different slip resistant finishes possible.*

APPLICATION AREAS

Monopur® Industry is used in areas where a combination of high chemical, mechanical and fluctuating thermal resistance is required.



TYPICAL APPLICATIONS INCLUDE:

FOOD AND BEVERAGE INDUSTRY

- Dairies
- Cheese and milk production
- Bakeries
- Chocolate factories
- Soft drink and fruit juices
- Breweries
- Distilleries
- Fruit and vegetable processing plants
- Fast food and ready meals
- Airline catering
- Meat and fish processing

TRANSPORT

- Truck car wash
- Mechanical workshop
- Aircraft hangars

WAREHOUSES

- Industrial and hotel kitchens.
- Catering facilities

CHEMICAL INDUSTRY

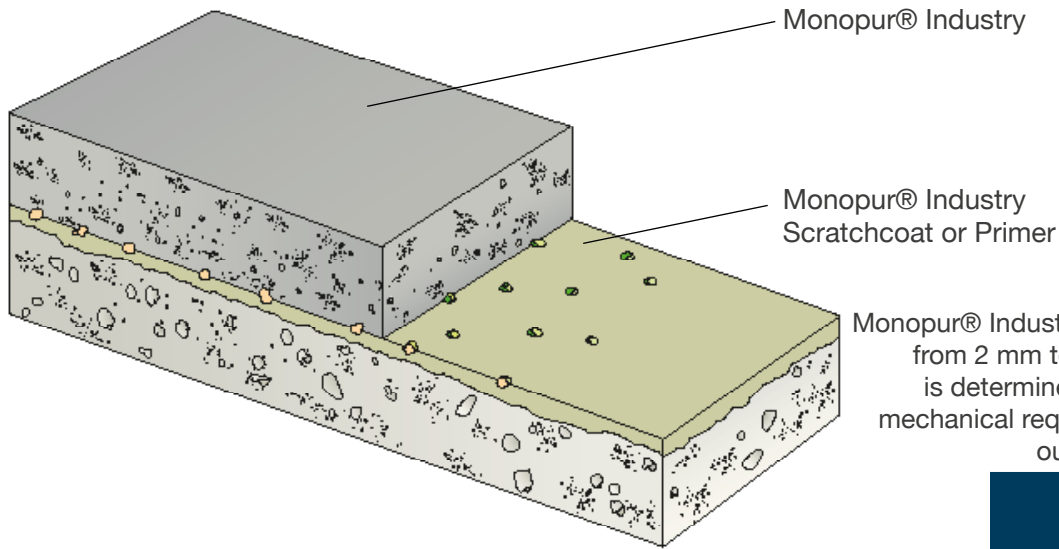
- Production areas
- Storage and packaging

PHARMACEUTICALS

- Packaging and production research
- Hospital theatres

GENERAL INDUSTRIES

- Tobacco
- Electronics



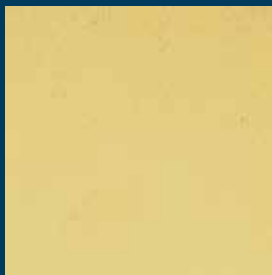
BUILD-UP

Monopur® Industry can be applied in thicknesses from 2 mm to 9 mm. The choice of thickness is determined by the thermal resistance and mechanical requirements. For more info consult our Technical Service Department.

Monopur® Industry is available in five standard colours:



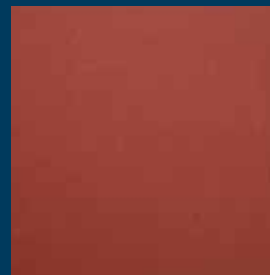
BUFF



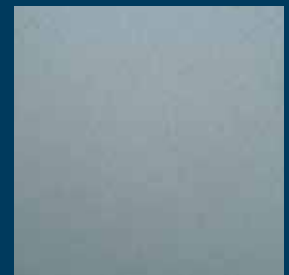
CREAM



GREEN



RED



GREY

Monopur® Industry is also available in colourless.

Note: Colours are approximate because of printing limitations.

This brochure is not intended to establish product recommendations for any installation. To the best of our knowledge the information contained herein is true and accurate at the time of issue, but is subject to change without prior notice. No part of this brochure may be copied without written authorisation of the RPM Belgium Vandex Group®.

WARRANTY

The RPM Belgium Vandex Group® warrant all goods to be free from defects and will replace materials proven to be defective. The given information corresponds to our present standard of knowledge. However, it is the buyer's responsibility to determine the suitability of the products in individual cases by conducting own tests.

The RPM Belgium Vandex Group® is a subsidiary of RPM Inc., USA, a public owned American company. The RPM Belgium Vandex Group® is a leading manufacturer of industrial flooring systems, waterproofing products, coatings, sealants and membranes. RPM Belgium Vandex Group® is certified by Lloyd's as a ISO 9001 company and all products are controlled according to the ISO 9001 quality standard.

AUTHORISED APPLICATOR:



RPM BELGIUM N.V.

H. Dunantstraat 11B • B-8700 Tielt • T.: +32 (0) 51 40 38 01

ALTECO TECHNIK GMBH

Raiffeisenstraße 16 • D-27239 Twistringen • T.: +49 (0) 42 43 92 95 0

HERMETA GMBH

Kanalstraße 11 • D-12357 Berlin • T.: +49 (0) 30 661 70 72

MONILE FRANCE SARL

10, rue de la Lande • F-35430 St. Jouan des Guerets • T.: +33 (0) 608 86 96 56

ALTECO POLYMER SYSTEMS

436 Seventh Avenue, Suite 1850 • Pittsburgh, PA 15219 • +1 216 258 8715

VANDEX INTERNATIONAL LTD

Rötistrasse 6 • CH-4501 Solothurn • T.: +41 (0) 32 626 36 36

VANDEX ISOLIERMITTEL GMBH

Industriestraße 19-23 • D-21493 Schwarzenbek • T.: +49 (0) 41 51 89 15 0

VANDEX AG

Rötistrasse 6 • CH-4501 Solothurn • T.: +41 (0) 32 626 36 46